



AMALIA HOTEL

ATHENS

Guest Directory



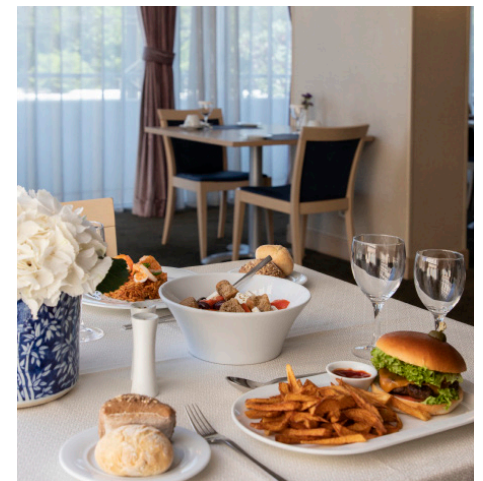
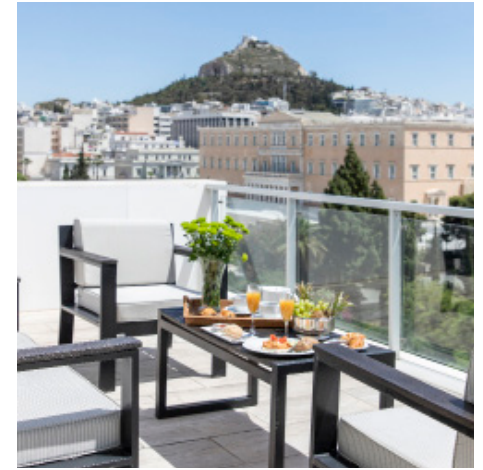
THE HOTEL



The Amalia Hotel Athens is a member of the Amalia Hotel Group, one of the oldest hotel chains in Greece, which opened its doors in the early 60s and immediately became a favorite destination for visitors to Athens.

In the heart of the city, overlooking the Hellenic Parliament and the National Garden, Amalia Hotel is an ideal destination for both leisure and business travelers.

The Amalia Hotels Group is committed to implementing a strategy for a clean environment, using environmentally friendly technologies for recycling, saving water and energy in an effort to continuously improve the quality of services offered to guests and with respect to local communities. Amalia Hotel Athens is Green Key certified by the Foundation for Environmental Education (FEE).



MANAGEMENT & STAFF



Dear Valued Guest,

Welcome to the Amalia Hotel Athens.

We would like to thank you for selecting our hotel as your accommodation and wish you a pleasant stay. The management and our hotel staff are always on hand to assist you with anything you may need to make your stay comfortable in our hotel. It is our goal to ensure that your time with us is an enjoyable and memorable experience. With this in mind, we have gathered the information below to assist you in becoming acquainted with our hotel.

Sincerely,

Vasilis Kokkinos
Hotel Manager



USEFUL INFORMATION



EMERGENCY EXITS

Carefully read the instructions which are posted in your room and public areas. On each floor, there are marked stairways leading to the ground floor. We remind you that in case of an emergency, the use of lifts is forbidden.

FIRE SAFETY

The hotel has installed a fire safety system. All rooms are equipped with smoke detectors, and sprinklers and fire extinguishers can be found in corridors and all public areas.

ACCESSIBILITY

All rooms can be accessed by elevators or stairs. Wheelchairs are available to use within the hotel. Should you need a wheelchair to explore the city, kindly contact the reception for a rental service.

ELEVATORS

If you are in an elevator during a power cut, press the alarm button and you'll be able to speak with the reception desk. Children under 12 years of age are not allowed to use elevators if not accompanied by an adult.

DOCTORS & PHARMACIES

For medical assistance and working hours of pharmacies in the area, please refer to reception.

ELECTRIC CURRENT

In Greece the electric current is 220 Volts. If necessary, the reception can provide adjustable adaptors upon availability.

NO SMOKING

Smoking is prohibited in all rooms and public areas of the hotel.

ELECTRONIC SAFE BOX

All rooms are equipped with safety boxes for the safekeeping of your valuables. In addition, the reception can also provide safes free of charge. The hotel cannot be responsible for any missing items not previously handed to reception for safekeeping.

LOST OBJECTS

In the event of loss of a personal item in the hotel, please contact the reception.

PARKING

There is a private parking close to the hotel.

EXCURSIONS

For excursions or sightseeing you can contact [CHAT Tours](http://chat-tours.com) at chat-tours.com or refer to the reception.

PETS ARE NOT ALLOWED

Only service pets are allowed.

GUEST SERVICES



BREAKFAST & DINING

The restaurant at mezzanine floor offers Greek & Mediterranean cuisine, including breakfast which is served from 6:30 to 10:30 a.m.

The Chrysalis Lounge, which is located in the hotel lobby, offers refreshments, drinks, light snacks and desserts, and is open daily from 8:00 – 23:00 p.m.

All dishes are made with local and excellent quality products.

ROOM SERVICE

Available 24 hours. Please consult the menu in your room. Kindly note that from 22:30 to 06:30 we only offer light snacks.

ACTIVITY

The hotel gym is open from 8:00 to 23:00.



HOTEL SERVICES



Our staff is available to assist you on a 24h basis

- Check-in is at 15:00 p.m. / Check-out is at 11:00 a.m.
- There is a 24h service at the front desk
- All credit cards accepted – Visa, Mastercard, Union Pay, American Express, Diners
- Seasonal air-conditioning in the hotel
- Electronic check-in available
- Internet corner with an accessible computer
- Free Wi-Fi
- Premium Wi-Fi available for guests & corporate meetings (surcharge)
- Stairs & elevator access to all rooms
- Electronic key-card system
- Electronic safe in all rooms
- Minibar in all rooms
- Tea/coffee stations in all rooms
- Porter service & luggage storage
- Concierge, Tour & Transfer Services
- Early check-in & late check-out (upon request / surcharge)
- Wake-up service

- PPE on Covid-19 (upon request / complimentary)
- Doctor on call
- Ironing services
- Laundry services (surcharge)
- Baby-sitting (upon request / surcharge)
- Turn down service (upon request)
- 24-hour room service (night menu available)
- For extra pillows or a blanket please refer to the reception or housekeeping

ADDITIONAL SERVICES

Our front desk staff will be happy to assist you with any additional services you may require to facilitate your stay.

- Luggage storage
- Flowers
- Airline information
- Car rentals, taxis & transfer services
- Courier & postal services
- Secretarial assistance (surcharge)
- Massage services (services called to the hotel)

MEETINGS & EVENTS

Amalia Hotel Athens offers fully equipped halls for business and social meetings, capable of seating up to 300 persons. For further information please contact the reception.

THIS IS ATHENS



PLACES OF INTEREST

Amalia Hotel Athens is the perfect place to start your day exploring Athens.

You may find more details about historical and archaeological sites, cultural and art museums, beaches, organized tours to nearby towns and islands, as well as hotspots for shopping and entertainment on our website at amaliahotels.com

AMALIA HOTELS

The Amalia Hotel Group is one of the oldest hotel chains in Greece. Founded in 1958 the company's goal was to combine the best Greece has to offer in history, culture, and amazing scenery along with an exceptional line of services. The hotels are located in premium locations, in destinations of cultural and natural interest (Athens, Nafplio, Olympia, Delphi, Kalambaka and Preveza).

More than half a century since its opening, Amalia Hotels have enjoyed continuous growth, maintaining the group's sense of warm hospitality throughout time, becoming one of the top choices for travelers.

Welcome to Amalia Hotels. Welcome to the place where history meets Greek hospitality.

